



PHYSICIANS 2004

TRENDS IN PROFESSIONAL SUPPLY

STATE TOTAL

There were 17,349 active, licensed, in-state physicians in North Carolina in 2004.

The 1.5% (+259) growth of physicians licensed by the NC Medical Board between 2003 and 2004 is less than seen in the previous year, continuing the slowing trend in growth of physician supply. This is the sixth consecutive year that physician workforce growth has been less than 3%. In 2004, every county in North Carolina had at least one physician reporting a primary practice location. The lowest numbers were found in Tyrrell (1), Hyde (1), Camden (2) and Perquimans (2). The largest percentage growth in the supply of physicians between 2003 and 2004 occurred in Washington (+2, 25.0%), Caswell (+2, 16.7%), and Chatham (+6, 17.1%) counties. Forty-seven counties experienced an increase in the number of physicians. Thirty-five counties lost physicians. The greatest loss was in Orange County (-21, 1.9%) while the largest percentage decrease was in Hyde County (-1, -50.0%). Eighteen counties had no change in supply.

PHYSICIAN STATISTICS AND DEMOGRAPHICS

In North Carolina 39% of physicians work in a group office, 20% work in a hospital setting and 12% are solo practitioners. Nine percent work for a medical school or parent university and 5% work in a free-standing clinic. For 12% of physicians the facility type is unknown.

GENDER

The physician workforce in North Carolina is 75% male and 25% female.

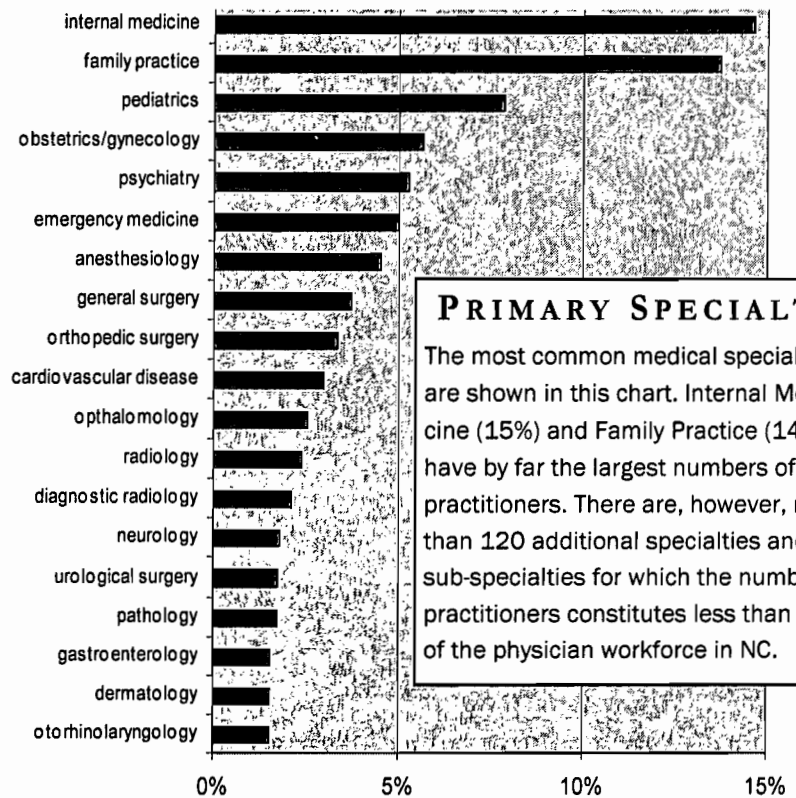
RACE

- White/non-Hispanic 79%
- Black /non-Hispanic 6%
- American Indian/Alaskan <1%
- Asian/Pacific Islander 6%
- Hispanic 2%
- Other /Unknown 7%

AGE

- <31 yrs 3%
- 31-40 yrs 30%
- 41-50 yrs 35%
- 51-60 yrs 22%
- 61-70 yrs 8%
- >70 yrs 2%

The average age of physicians is 46 years.

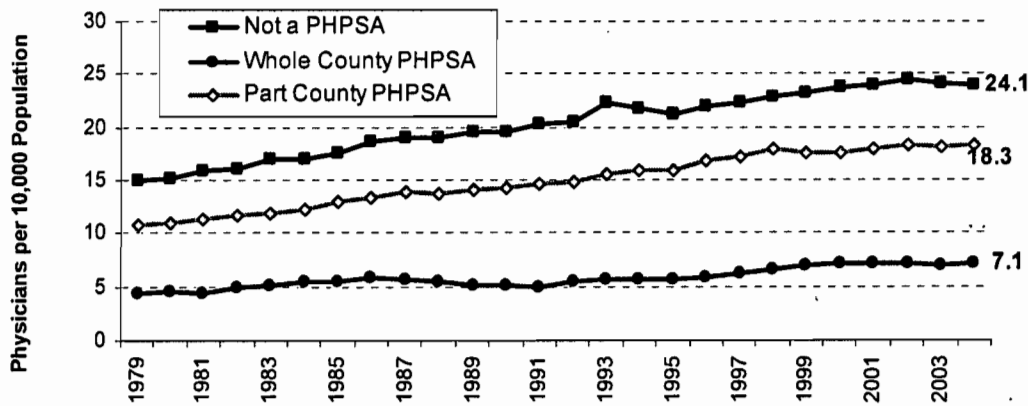


PRIMARY SPECIALTY

The most common medical specialties are shown in this chart. Internal Medicine (15%) and Family Practice (14%) have by far the largest numbers of practitioners. There are, however, more than 120 additional specialties and sub-specialties for which the number of practitioners constitutes less than 1% of the physician workforce in NC.

Sources: North Carolina Health Professions Data System and the Southeast Regional Center for Health Workforce Studies, 1979-2004, with data derived from the North Carolina Medical Board; HRSA, Bureau of Health Professions; US Bureau of the Census; North Carolina Office of State Management and Budget. NC population data are smoothed figures based on 1980, 1990 and 2000 Censuses. Figures include all licensed, active, in-state physicians.

PHYSICIANS PER 10,000 POPULATION BY PERSISTENT HEALTH PROFESSIONAL SHORTAGE AREA (PHPSA) STATUS, NC 1979-2004

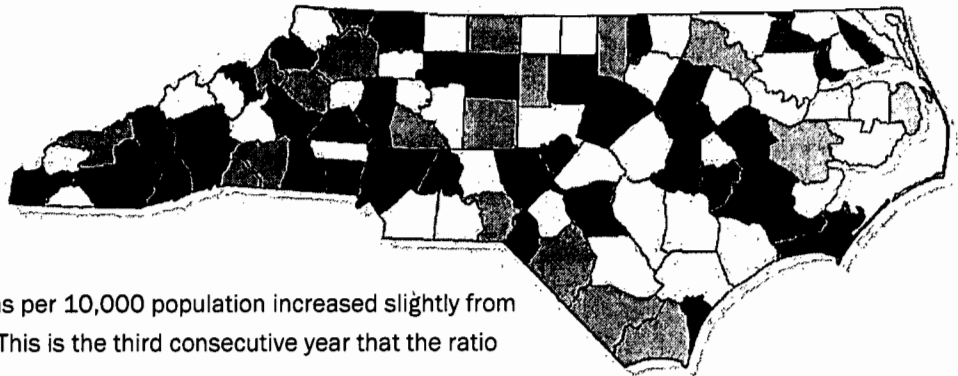


Source for HPSAs
Area Resource File, HRSA,
Department of Health and
Human Services, 1998.
Persistent HPSAs are those
designated as HPSAs by
HRSA from 1993 through
1997, or in 6 of the last 7
releases of HPSA definitions.

NORTH CAROLINA PHYSICIANS PER 10,000 POPULATION

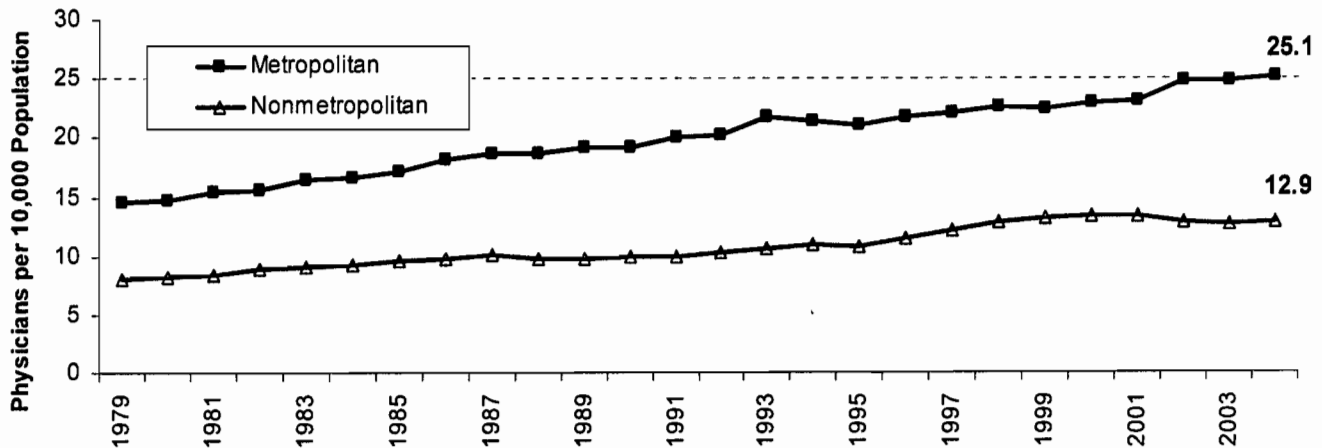
Physicians per 10,000 Population
(# of counties)

- 19.97 to 90.02 (19)
- 13.89 to 19.96 (21)
- 9.31 to 13.88 (19)
- 6.08 to 9.30 (20)
- 1.69 to 6.07 (21)



The 2004 ratio of N.C. physicians per 10,000 population increased slightly from 20.1 in 2003 to 20.3 in 2004. This is the third consecutive year that the ratio has remained nearly constant.

PHYSICIANS PER 10,000 POPULATION BY METROPOLITAN AND NONMETROPOLITAN COUNTIES, NORTH CAROLINA 1979-2004



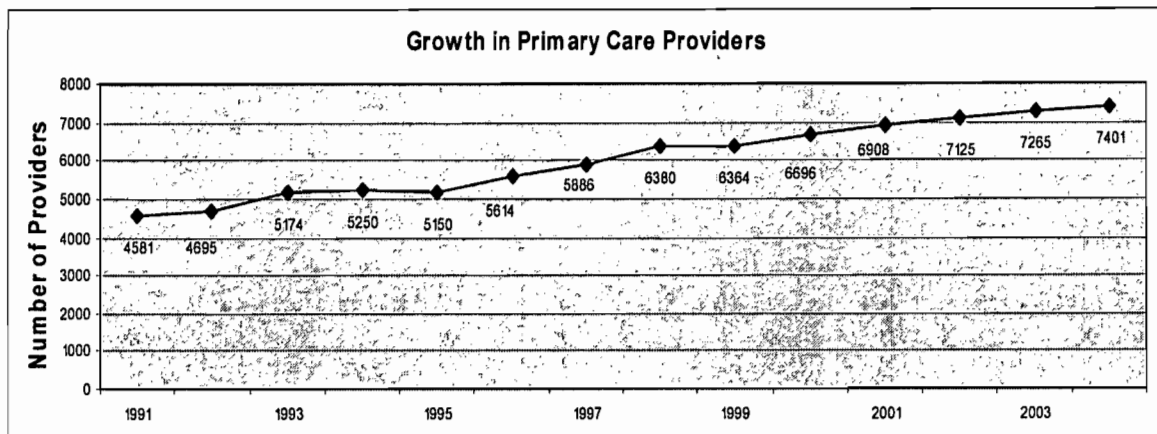
Source for Metropolitan-Non-metropolitan definition: Office of Management and Budget, 1993.

TRENDS IN SUPPLY OF PRIMARY CARE PHYSICIANS

Primary care physicians are those who report their primary specialty as family practice, general practice, internal medicine, pediatrics, or obstetrics/ gynecology. The supply of primary care physicians increased at the slightly greater rate than the physician supply (1.9%) in 2004. However, when compared with the previous year there is a slowing in growth from a rate of 2.0% to 1.9%. For the past five years the growth of the primary care physician workforce has slowed, from 5.2% (+332) in 1999.

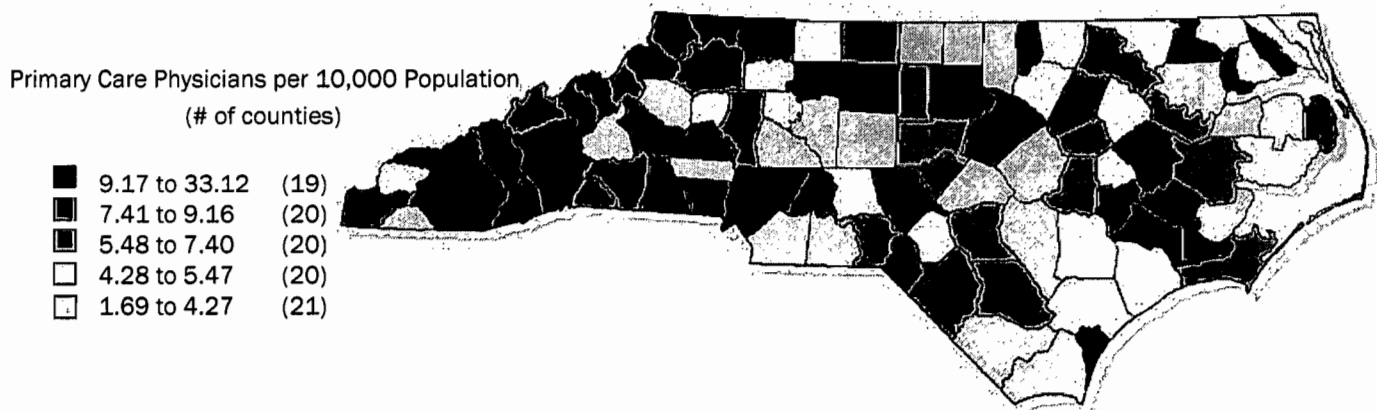
STATE TOTAL
 In NC in 2004 there were 7,401 licensed, active, in-state primary care physicians, an increase of 1.9% from 2003 (7,265).

- Forty-three counties increased the numbers of primary care physicians, with Sampson (+8, 32.0%), Watauga (+10, 25.6%), Washington (+1, 20.0%), Mitchell (+3, 20.0%), and Caswell (+2, 20.0%) experiencing the largest percentage gains. Mecklenburg (+31, 4.3%) and Forsyth (+20, 5.0%) counties gained the most primary care physicians.
- The number of primary care physicians remained stable in twenty-four counties.
- Twenty-three counties had a reduction in supply. The largest decrease was in Orange County (-16,-3.8%).



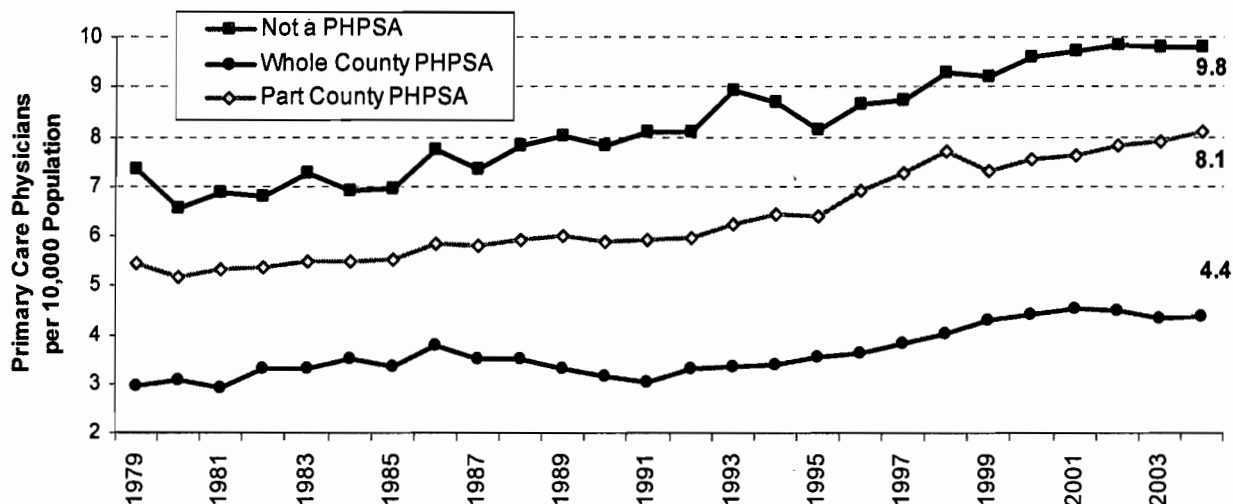
PRIMARY CARE PHYSICIANS PER 10,000 POPULATION

According to national data there were 9.4 primary care physicians per 10,000 population on average in the United States at the beginning of 2003. This compares to a ratio in North Carolina of 8.6 primary care physicians per 10,000 population. Tennessee and Virginia had larger numbers of primary care physicians per 10,000 population than North Carolina (with ratios of 9.1 and 9.3 respectively), and Georgia and South Carolina has small ratios (8.3 and 8.2 respectively).



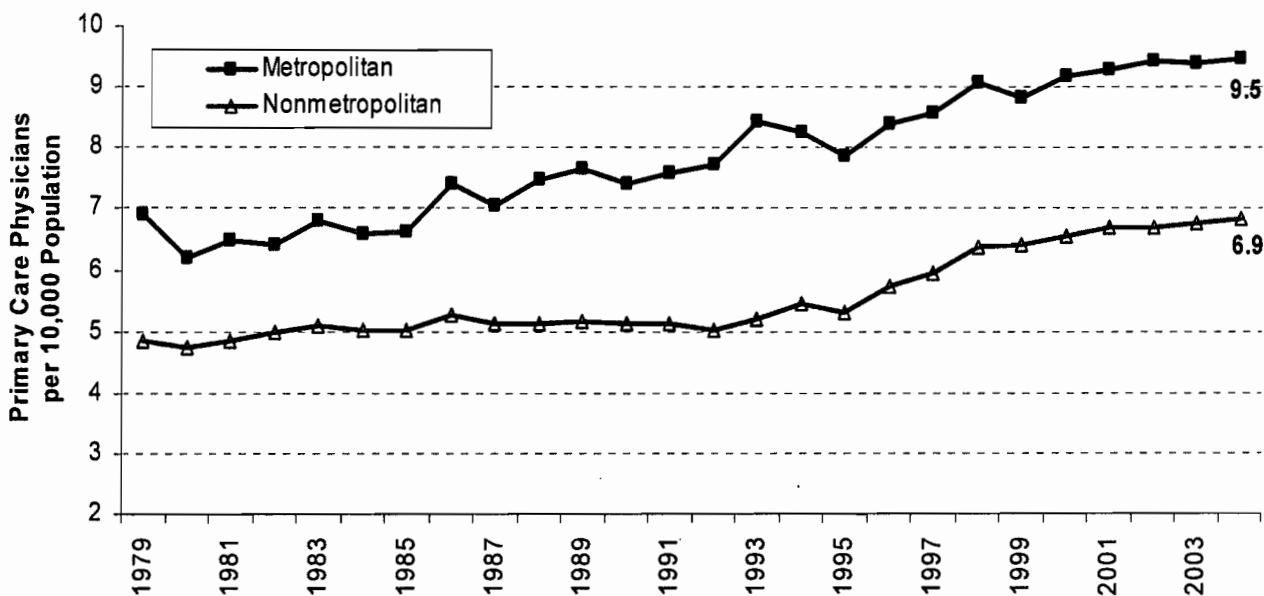
Source: AMA Master file, effective 12/21/03. The AMA master file relies on survey data and is updated throughout the year while the North Carolina licensure data are collected in October each year. Figures include all licensed active nonfederal non-resident-in-training primary care physicians. NC population data are smoothed figures based on 1980, 1990 and 2000 Censuses.

PRIMARY CARE PHYSICIANS PER 10,000 POPULATION BY PERSISTENT HEALTH PROFESSIONAL SHORTAGE AREA (PHPSA) STATUS, NC 1979-2004



Source for Health Professional Shortage Areas: Area Resource File, HRSA, Department of Health and Human Services, 1998. Persistent HPSAs are those designated as HPSAs by HRSA from 1993 through 1997, or in 6 of the last 7 releases of HPSA definitions.

PRIMARY CARE PHYSICIANS PER 10,000 POPULATION BY METROPOLITAN AND NONMETROPOLITAN COUNTIES, NC 1979-2004



The data for the N.C. Health Professions Data System are provided to the respective licensing boards by health professionals at the time of initial licensure or renewal. The data are tabulated by the Sheps Center but at all times remain the property of the boards. Funding for the HPDS comes from the NC Area Health Education Centers Program (AHEC) and the UNC-Chapel Hill Office of the Provost (Health Affairs).

Mecklenburg



MSA county designation: Metropolitan

AHEC Region: Charlotte

■ 2004 ACTIVE HEALTH PROFESSIONALS*■

Physicians

Non-Federal Physicians	1,916
Primary Care Physicians	755
<i>Family Practice</i>	190
<i>General Practice</i>	6
<i>Internal Medicine</i>	278
<i>Obstetrics/Gynecology</i>	124
<i>Pediatrics</i>	157
Other Specialties	1,154
Physicians per 10,000 Population	24.9
Primary Care Physicians per 10,000 Population	9.8
Federal Physicians**	13

Dentists and Dental Hygienists

Dentists	479
Dental Hygienists	501

Nurses

Registered Nurses	8,951
<i>Nurse Practitioners</i>	224
<i>Certified Nurse Midwives</i>	10
Licensed Practical Nurses	1,107

Other Health Professionals

Chiropractors	194
Optometrists	100
Pharmacists	745
Physical Therapists	423
Physical Therapist Assistants	188
Physician Assistants	220
Podiatrists	28
Practicing Psychologists	181
Psychological Associates	78
Respiratory Therapists	372

■ DEMOGRAPHICS ■

Projected Population 2004

	Total	Ages 0-19	Ages 20-64	Ages 65+
White	512,846	135,057	328,053	49,736
Nonwhite	256,997	86,382	156,956	13,659
Total	769,843	221,439	485,009	63,395
% of Pop.	100.0%	28.8%	63.0%	8.2%

Employment and Income Data

Labor Force 2004	419,696
Employed 2004	398,471
Unemployed 2004	21,225
Unemployment Rate 2004 (%)	5.1
Per Capita Income 2003	\$38,376
Medicaid Eligibles 2003 <i>(unduplicated count)</i>	116,273

■ HEALTH-RELATED STATISTICS ■

Vital Statistics 2003

(Rates are per 1,000 population)

Resident Births	12,773	Total Pregnancies	17,071	Total Pregnancy Rate	95.3
Resident Deaths	4,763	Teen Pregnancies <i>(ages 15-19)</i>	1,506	Teen Pregnancy Rate <i>(ages 15-19)</i>	59.7
% Births <2500 gms	8.6				

Infant Mortality Rates 2003

(Rates are per 1,000 population)

Total	6.8	White	4.0	Nonwhite	12.0
-------	-----	-------	-----	----------	------

Hospital/Facility Data

General Hospital Discharges 2003 ⁺	69,688	General Hospital Beds 2004 ⁺⁺	1,989	Nursing Facility Beds 2004	3,088
---	--------	--	-------	----------------------------	-------

*Numbers reported include those who are active within the profession and those with unknown activity status who were newly licensed in 2004; inactive are excluded.

* Includes NC Medical Board licensed federal physicians in the armed services, US Public Health Service, Indian Health Service, and the Department of Veterans Affairs.

⁺Counts are for discharges of county residents from acute-care, short-stay hospitals; numbers exclude normal newborns.

⁺⁺Counts of hospital beds in acute care short stay hospitals in county.

Mecklenburg



MSA county designation: Metropolitan

AHEC Region: Charlotte

■ 2005 ACTIVE HEALTH PROFESSIONALS*■

Physicians

Non-Federal Physicians	2,035
Primary Care Physicians	798
<i>Family Practice</i>	203
<i>General Practice</i>	9
<i>Internal Medicine</i>	286
<i>Obstetrics/Gynecology</i>	132
<i>Pediatrics</i>	168
Other Specialties	1,237
Physicians per 10,000 Population	25.9
Primary Care Physicians per 10,000 Population	10.1
Federal Physicians**	10

Dentists and Dental Hygienists

Dentists	504
Dental Hygienists	494

Nurses

Registered Nurses	9,189
<i>Nurse Practitioners</i>	243
<i>Certified Nurse Midwives</i>	9
Licensed Practical Nurses	1,141

Other Health Professionals

Chiropractors	193
Optometrists	94
Pharmacists	748
Physical Therapists	445
Physical Therapist Assistants	196
Physician Assistants	247
Podiatrists	29
Practicing Psychologists	189
Psychological Associates	78
Respiratory Therapists	399

■ DEMOGRAPHICS ■

Projected Population 2005

	Total	Ages 0-19	Ages 20-64	Ages 65+
White	522,334	137,393	334,466	50,475
Nonwhite	264,317	88,159	161,988	14,170
Total	786,651	225,552	496,454	64,645
% of Pop.	100.0%	28.7%	63.1%	8.2%

Employment and Income Data

Labor Force 2005	430,061
Employed 2005	409,047
Unemployed 2005	21,014
Unemployment Rate 2005 (%)	4.9
Per Capita Income 2004	\$40,416
Medicaid Eligibles 2004 <i>(unduplicated count)</i>	123,387

■ HEALTH-RELATED STATISTICS ■

Vital Statistics 2004

(Rates are per 1,000 population)

Resident Births	12,952	Total Pregnancies	17,109	Total Pregnancy Rate	94.0
Resident Deaths	4,676	Teen Pregnancies <i>(ages 15-19)</i>	1,541	Teen Pregnancy Rate <i>(ages 15-19)</i>	58.3
% Births <2500 gms	8.3				

Infant Mortality Rates 2004

(Rates are per 1,000 population)

Total	9.2	White	6.3	Nonwhite	14.7
-------	-----	-------	-----	----------	------

Hospital/Facility Data

General Hospital Discharges 2004 [†]	70,826	General Hospital Beds 2005 ^{††}	1,989	Nursing Facility Beds 2005	3,088
---	--------	--	-------	----------------------------	-------

* Numbers reported include those who are active within the profession and those with unknown activity status who were newly licensed in 2005; inactive are excluded.

** Includes NC Medical Board licensed federal physicians in the armed services, US Public Health Service, Indian Health Service, and the Department of Veterans Affairs.

† Counts are for discharges of county residents from acute-care, short-stay hospitals; numbers exclude normal newborns.

†† Counts of hospital beds in acute care short stay hospitals in county.

Mecklenburg



MSA county designation: Metropolitan

AHEC Region: Charlotte AHEC

■ 2006 ACTIVE HEALTH PROFESSIONALS*■

Physicians

Non-Federal Physicians	2,151
Primary Care Physicians	866
Family Practice	230
General Practice	8
Internal Medicine	311
Obstetrics/Gynecology	129
Pediatrics	188
Other Specialties	1,285
Physicians per 10,000 Population	26.0
Primary Care Physicians per 10,000 Population	10.5
Federal Physicians**	6

Dentists and Dental Hygienists

Dentists	530
Dental Hygienists	543

Nurses

Registered Nurses	9,091
Nurse Practitioners	292
Certified Nurse Midwives	12
Licensed Practical Nurses	1,135

Other Health Professionals

Chiropractors	193
Occupational Therapists	251
Occupational Therapy Assistants	75
Optometrists	96
Pharmacists	841
Physical Therapists	481
Physical Therapist Assistants	216
Physician Assistants	270
Podiatrists	31
Practicing Psychologists	200
Psychological Associates	75
Respiratory Therapists	428

■ DEMOGRAPHICS ■

Projected Population 2006

	Total	Ages 0-19	Ages 20-64	Ages 65+
White	545,905	142,616	351,315	51,974
Nonwhite	280,992	93,355	172,465	15,172
Total	826,897	235,971	523,780	67,146
% of Pop.	100.0%	28.5%	63.3%	8.1%

Employment and Income Data

Labor Force 2006	447,144
Employed 2006	427,125
Unemployed 2006	20,019
Unemployment Rate 2006 (%)	4.5
Per Capita Income 2005	\$42,984
Medicaid Eligibles 2006	130,413

■ HEALTH-RELATED STATISTICS ■

Vital Statistics 2005

(Rates are per 1,000 population)

Resident Births	13,527	Total Pregnancies	17,895	Total Pregnancy Rate	95.7
Resident Deaths	4,781	Teen Pregnancies (ages 15-19)	1,584	Teen Pregnancy Rate (ages 15-19)	57.5
% Births <2500 gms	8.6				

Infant Mortality Rates 2006

(Rates are per 1,000 population)

Total	8.4	White	5.6	Nonwhite	13.5
-------	-----	-------	-----	----------	------

Hospital/Facility Data

General Hospital Discharges 2005 ⁺	76,076	General Hospital Beds 2006 ⁺⁺	1,974	Nursing Facility Beds 2006	3,088
---	--------	--	-------	----------------------------	-------

* Numbers reported include those active within the profession and those newly licensed in 2006 with unknown activity status; inactives are excluded

** Includes NC Medical Board licensed federal physicians in the armed services, US Public Health Service, Indian Health Service, and the Department of Veterans Affairs.

+Counts are for discharges of county residents from acute-care, short-stay hospitals; numbers exclude normal newborns.

++Counts of hospital beds in acute care short stay hospitals in county.


U.S. Census Bureau

State & County QuickFacts

Mecklenburg County, North Carolina

People QuickFacts	Mecklenburg County	North Carolina
Population, 2006 estimate	827,445	8,856,505
Population, percent change, April 1, 2000 to July 1, 2006	19.0%	10.1%
Population, 2000	695,454	8,049,313
Persons under 5 years old, percent, 2006	8.0%	6.9%
Persons under 18 years old, percent, 2006	26.1%	24.3%
Persons 65 years old and over, percent, 2006	8.3%	12.2%
Female persons, percent, 2006	50.7%	51.0%
White persons, percent, 2006 (a)	64.4%	74.0%
Black persons, percent, 2006 (a)	29.9%	21.7%
American Indian and Alaska Native persons, percent, 2006 (a)	0.5%	1.3%
Asian persons, percent, 2006 (a)	3.9%	1.9%
Native Hawaiian and Other Pacific Islander, percent, 2006 (a)	0.1%	0.1%
Persons reporting two or more races, percent, 2006	1.2%	1.1%
Persons of Hispanic or Latino origin, percent, 2006 (b)	9.8%	6.7%
White persons not Hispanic, percent, 2006	55.4%	67.9%
Living in same house in 1995 and 2000, pct 5 yrs old & over	43.6%	53.0%
Foreign born persons, percent, 2000	9.8%	5.3%
Language other than English spoken at home, pct age 5+, 2000	13.1%	8.0%
High school graduates, percent of persons age 25+, 2000	86.2%	78.1%
Bachelor's degree or higher, pct of persons age 25+, 2000	37.1%	22.5%
Persons with a disability, age 5+, 2000	104,224	1,540,365
Mean travel time to work (minutes), workers age 16+, 2000	26.0	24.0
Housing units, 2006	369,905	4,028,959
Homeownership rate, 2000	62.3%	69.4%
Housing units in multi-unit structures, percent, 2000	32.4%	16.1%
Median value of owner-occupied housing units, 2000	\$141,800	\$108,300
Households, 2000	273,416	3,132,013
Persons per household, 2000	2.49	2.49
Median household income, 2004	\$49,683	\$40,863
Per capita money income, 1999	\$27,352	\$20,307
Persons below poverty, percent, 2004	12.8%	13.8%
Business QuickFacts	Mecklenburg County	North Carolina
Private nonfarm establishments, 2005	26,351	216,994 ¹
Private nonfarm employment, 2005	505,587	3,409,968 ¹
Private nonfarm employment, percent change 2000-2005	1.4%	0.7% ¹
Nonemployer establishments, 2005	61,519	583,495
Total number of firms, 2002	67,770	642,597

Black-owned firms, percent, 2002	11.4%	8.1%
American Indian and Alaska Native owned firms, percent, 2002	0.8%	0.9%
Asian-owned firms, percent, 2002	4.2%	2.1%
Native Hawaiian and Other Pacific Islander owned firms, percent, 2002	F	0.0%
Hispanic-owned firms, percent, 2002	3.1%	1.4%
Women-owned firms, percent, 2002	27.5%	27.1%
Manufacturers shipments, 2002 (\$1000)	8,389,564	156,821,943
Wholesale trade sales, 2002 (\$1000)	32,743,164	104,331,152
Retail sales, 2002 (\$1000)	10,567,506	88,821,486
Retail sales per capita, 2002	\$14,376	\$10,686
Accommodation and foodservices sales, 2002 (\$1000)	1,597,023	11,237,386
Building permits, 2006	13,676	99,979
Federal spending, 2004 (\$1000)	3,227,497	55,233,420 ¹

Geography QuickFacts	Mecklenburg County	North Carolina
Land area, 2000 (square miles)	526.28	48,710.88
Persons per square mile, 2000	1,322.2	165.2
FIPS Code	119	37
Metropolitan or Micropolitan Statistical Area	Charlotte-Gastonia-Concord, NC-SC Metro Area	

1: Includes data not distributed by county.

(a) Includes persons reporting only one race.

(b) Hispanics may be of any race, so also are included in applicable race categories.

D: Suppressed to avoid disclosure of confidential information

F: Fewer than 100 firms

FN: Footnote on this item for this area in place of data

NA: Not available

S: Suppressed; does not meet publication standards

X: Not applicable

Z: Value greater than zero but less than half unit of measure shown

Source U.S. Census Bureau: State and County QuickFacts. Data derived from Population Estimates, Census of Population and Housing, Small Area Income and Poverty Estimates, State and County Housing Unit Estimates, County Business Patterns, Nonemployer Statistics, Economic Census, Survey of Business Owners, Building Permits, Consolidated Federal Funds Report

Last Revised: Wednesday, 02-Jan-2008 15:08:39 EST